

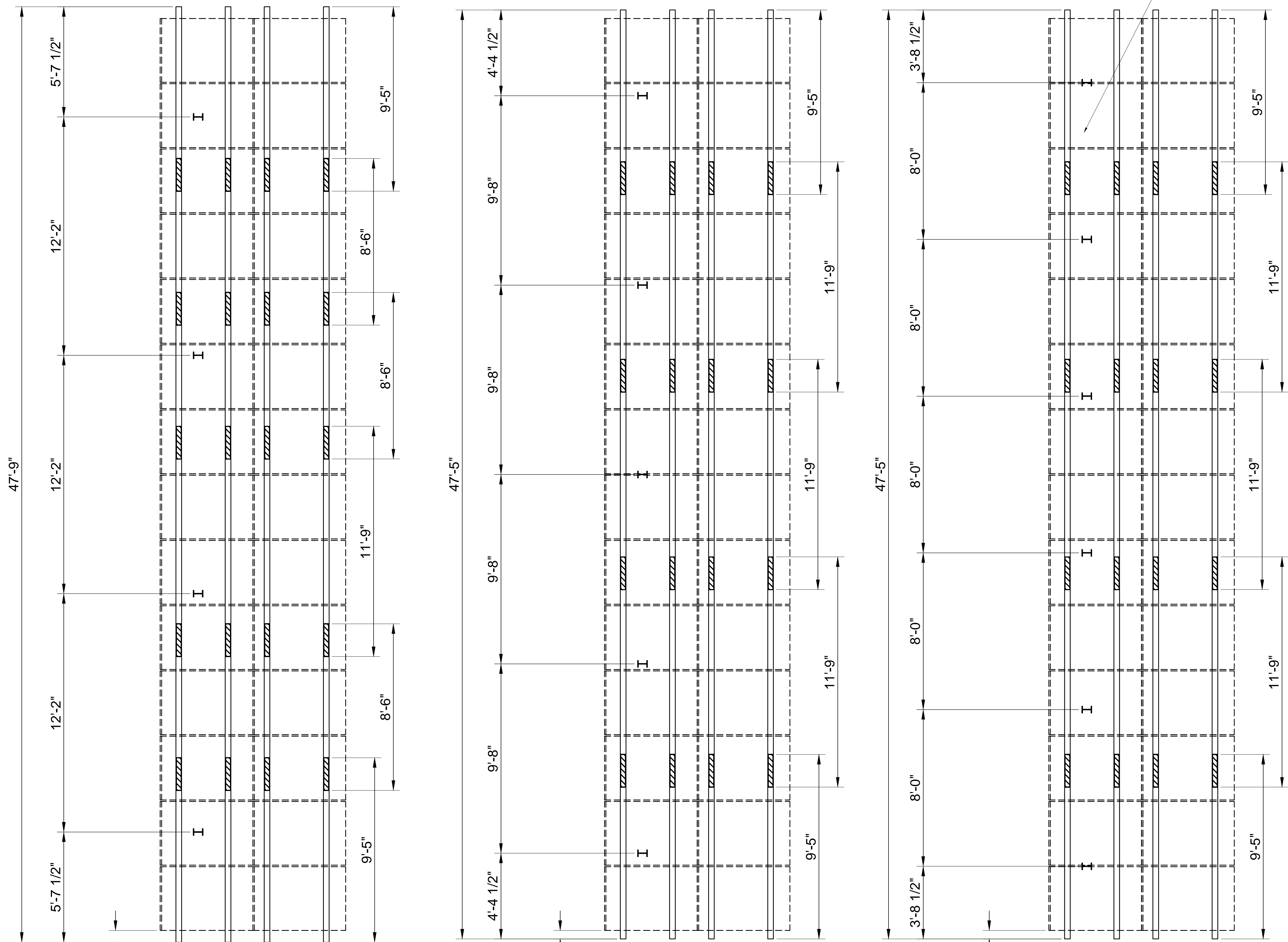
# 60 CELL MODULE

REVISIONS					
SYM	DESCRIPTION	DRAWN	CHECKED	APPROVED	DATE
-	RELEASED FOR PROPOSAL	TJS	RGC	KM	03/11/14

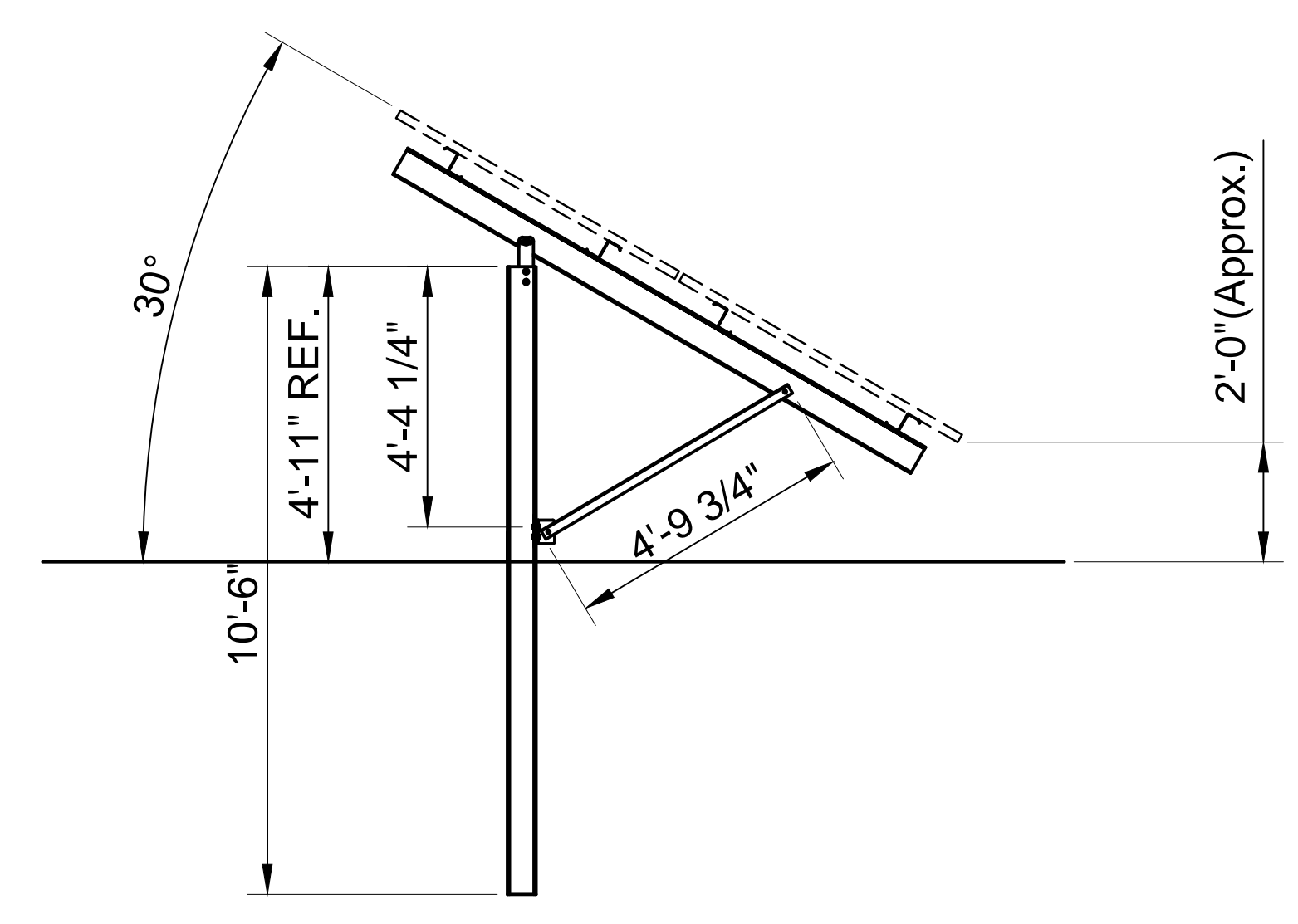
**GENERAL NOTES**

- THIS DRAWING CONTAINS CONFIDENTIAL INFORMATION AND IS ISSUED IN CONFIDENCE ON THE CONDITIONS THAT IT BE RETURNED ON DEMAND AND NOT BE COPIED, REPRODUCED, DISCLOSED TO OTHERS OR USED IN THE MANUFACTURE OF THE SUBJECT-MATTER THEREOF WITHOUT THE CONSENT OF APPLIED ENERGY TECHNOLOGIES.
- THIS LAYOUT IS AN APPROXIMATION AND IS INTENDED FOR QUOTING PURPOSES ONLY. ACTUAL SYSTEM SIZE, AND/OR LOCATION OF RACKING MAY VARY. IT IS THE RESPONSIBILITY OF THE INSTALLER TO CONFIRM THAT THE LOCATION OF THE RACKING DOES NOT INTERFERE WITH OR BECOME SHADED BY ANY OBSTRUCTIONS. AET ASSUMES NO RESPONSIBILITY OF THE RACKING CONFIGURATION.
- CONTRACTORS ARE TO VERIFY ALL DIMENSIONS AND CONDITIONS IN THE FIELD AND REPORT ANY AND ALL DISCREPANCIES TO AET PRIOR TO CONSTRUCTION / INSTALLATION.

**AET**  
**Applied Energy Technologies**  
 Engineered Solar Mounting Solutions  
 22367 STARKS DRIVE  
 CLINTON TOWNSHIP, MI 48036  
 586-466-5073 MAIN  
 586-466-5074 FAX  
 www.AETenergy.com



LOCATE PURLIN BRACE MID WAY BETWEEN POSTS TYP.



**SIDE VIEW - 60 CELL MODULE**

"A" REF.  
 AET PART #:OL60414  
 2 ROWS X 14 COLUMNS  
 4 POSTS  
 60 CELL MODULE

"A" REF.  
 AET PART #:OL60514  
 2 ROWS X 14 COLUMNS  
 5 POSTS  
 60 CELL MODULE

"A" REF.  
 AET PART #:OL60614  
 2 ROWS X 14 COLUMNS  
 6 POSTS  
 60 CELL MODULE

PANEL WIDTH (mm)	"A" (in.)
982	9.98
986	8.88
990	7.78
991	7.50
992	7.23
993	6.95
994	6.68
999	5.30
1000	5.02
1001	4.75

**DIMENSION "A"**

ASCE WIND SPEEDS		GROUND SNOW LOAD (PSF)										
7-05	7-10*	0	5	10	15	20	25	30	35	40	45	50
90	108	4	4	4	4	4	4	4	5	5	5	5
100	120	4	4	4	4	4	5	5	5	5	5	5
110	132	5	5	5	5	5	5	5	5	5	5	6
120	144	6	6	6	6	6	6	6	6	6	6	6

**POSTS PER ARRAY - 60 CELL MODULE**

BILL OF MATERIAL				
AET PART NO.	DESCRIPTION	OL60414	OL60514	OL60614
-	SOLAR MODULE (NOT INCLUDED)	28	28	28
-	GND MNT SYSTEM 2x14 ARRAY (28 MODULES)	1	1	1
81148-102	Z-PURLIN - 102" OR 8'-6" LONG	12	X	X
81148-113	Z-PURLIN - 113" OR 9'-5" LONG	8	8	8
81148-141	Z-PURLIN - 141" OR 11'-9" LONG	4	12	12
81148-152	Z-PURLIN - 152" OR 12'-8" LONG	X	X	X
81069	POST - W6 X 7 - 10'-6" LONG	4	5	6
81039	PLATE - POST TO Z-STRUT CONNECTOR	4	5	6
81072-120	Z-STRUT - 10' LONG FOR 60 CELL MODULE	4	5	6
81011	L-BRACKET - POST TO STRUT BRACE	4	5	6
81012	PURLIN BRACE - 10' LONG	3	4	5
81349-57.75	STRUT BRACE - 57.75" LONG FOR 60 CELL MODULE	4	5	6
80918	HEX NUT - 1/2" - 13	28	35	42
81026	HEX BOLT 1/2"-13 X 1.25"	16	20	24
80921	CARRIAGE BOLTS - 1/2"-13 X 1.25"	12	15	18
80911	BOLT - 3/8" X 1"	120	96	96
80682	WASHER - 3/8" HARDENED	240	192	192
80686	NUT - 3/8" GRADE 8	120	96	96
80687	FLAT HARDENED WASHER - 1/2"	44	55	66
81024	FLANGE NUT - 1/4"-20	44	56	68
81023	SCREW - 1/4"-20 DRILL POINT	44	56	68
81016	MID CLAMP ASM	52	52	52
81022	END CLAMP ASM	8	8	8

ENGINEER SEAL:  
 NOTE:  
 PROVIDED ENGINEERING DOCUMENTS AND/OR ENGINEER SEAL ABOVE ARE FOR THE CERTIFICATION OF THE RACKING SYSTEM AND ITS RESISTANCE TO WIND LOADS. THIS IS NOT A CERTIFICATION OF THE STRUCTURAL CAPACITY OF THE BUILDING TO TAKE THE BALLASTED LOAD PLUS EQUIPMENT WEIGHT.

CUSTOMER:  
 PROJECT NAME:  
 PROJECT LOCATION:

MODULE:  
 OUTPUT:  
 SYSTEM:  
 RACKING:  
 AET RAYPORT G ECO

DO NOT SCALE DRAWING  
 REPORT ALL DISCREPANCIES  
 DRAWN: TJS  
 CHECKED: RGC  
 APPROVED: JJK  
 DATE: 03/11/14  
 DRAWING DESCRIPTION:

2 ROWS X 14 COLUMNS  
 ARRAY

SHEET NUMBER:  
 1 of 2

DRAWING NUMBER:  
 REVISION:



NORTH

# 72 CELL MODULE

REVISIONS					
SYM	DESCRIPTION	DRAWN	CHECKED	APPROVED	DATE
-	RELEASED FOR PROPOSAL	TJS	RGC	KM	03/11/14

**GENERAL NOTES**

- THIS DRAWING CONTAINS CONFIDENTIAL INFORMATION AND IS ISSUED IN CONFIDENCE ON THE CONDITIONS THAT IT BE RETURNED ON DEMAND AND NOT BE COPIED, REPRODUCED, DISCLOSED TO OTHERS OR USED IN THE MANUFACTURE OF THE SUBJECT-MATTER THEREOF WITHOUT THE CONSENT OF APPLIED ENERGY TECHNOLOGIES.
- THIS LAYOUT IS AN APPROXIMATION AND IS INTENDED FOR QUOTING PURPOSES ONLY. ACTUAL SYSTEM SIZE, AND/OR LOCATION OF RACKING MAY VARY. IT IS THE RESPONSIBILITY OF THE INSTALLER TO CONFIRM THAT THE LOCATION OF THE RACKING DOES NOT INTERFERE WITH OR BECOME SHADED BY ANY OBSTRUCTIONS. AET ASSUMES NO RESPONSIBILITY OF THE RACKING CONFIGURATION.
- CONTRACTORS ARE TO VERIFY ALL DIMENSIONS AND CONDITIONS IN THE FIELD AND REPORT ANY AND ALL DISCREPANCIES TO AET PRIOR TO CONSTRUCTION / INSTALLATION.



**Applied Energy Technologies**  
Engineered Solar Mounting Solutions

www.AETenergy.com

586-466-5073 MAIN  
586-466-5074 FAX

22367 STARKS DRIVE  
CLINTON TOWNSHIP, MI 48036

ENGINEER SEAL:

NOTE:  
PROVIDED ENGINEERING DOCUMENTS AND/OR ENGINEER SEAL ABOVE ARE FOR THE CERTIFICATION OF THE RACKING SYSTEM AND ITS RESISTANCE TO WIND LOADS. THIS IS NOT A CERTIFICATION OF THE STRUCTURAL CAPACITY OF THE BUILDING TO TAKE THE BALLASTED LOAD PLUS EQUIPMENT WEIGHT.

CUSTOMER:

PROJECT NAME:

PROJECT LOCATION:

MODULE:

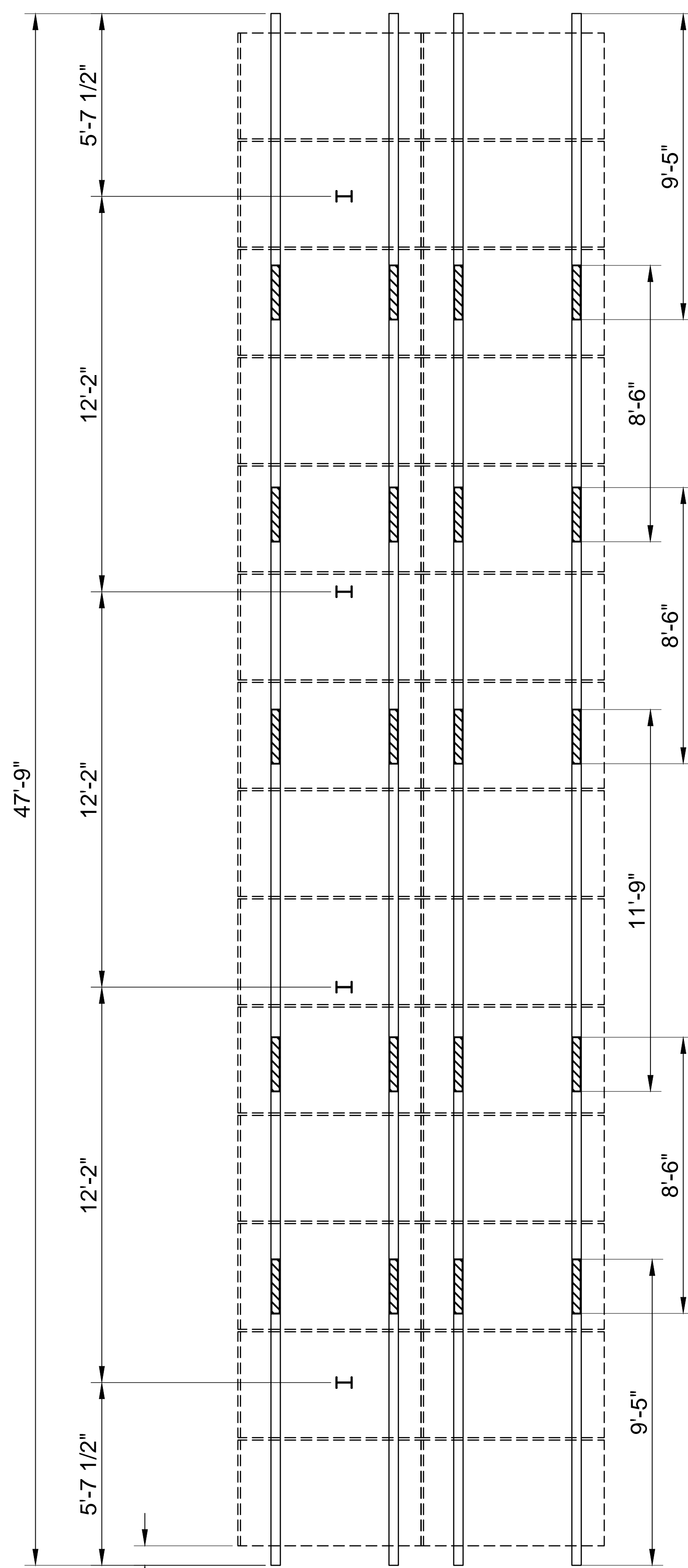
OUTPUT:  
SYSTEM:  
RACKING:  
AET RAYPORT G ECO

DO NOT SCALE DRAWING  
REPORT ALL DISCREPANCIES

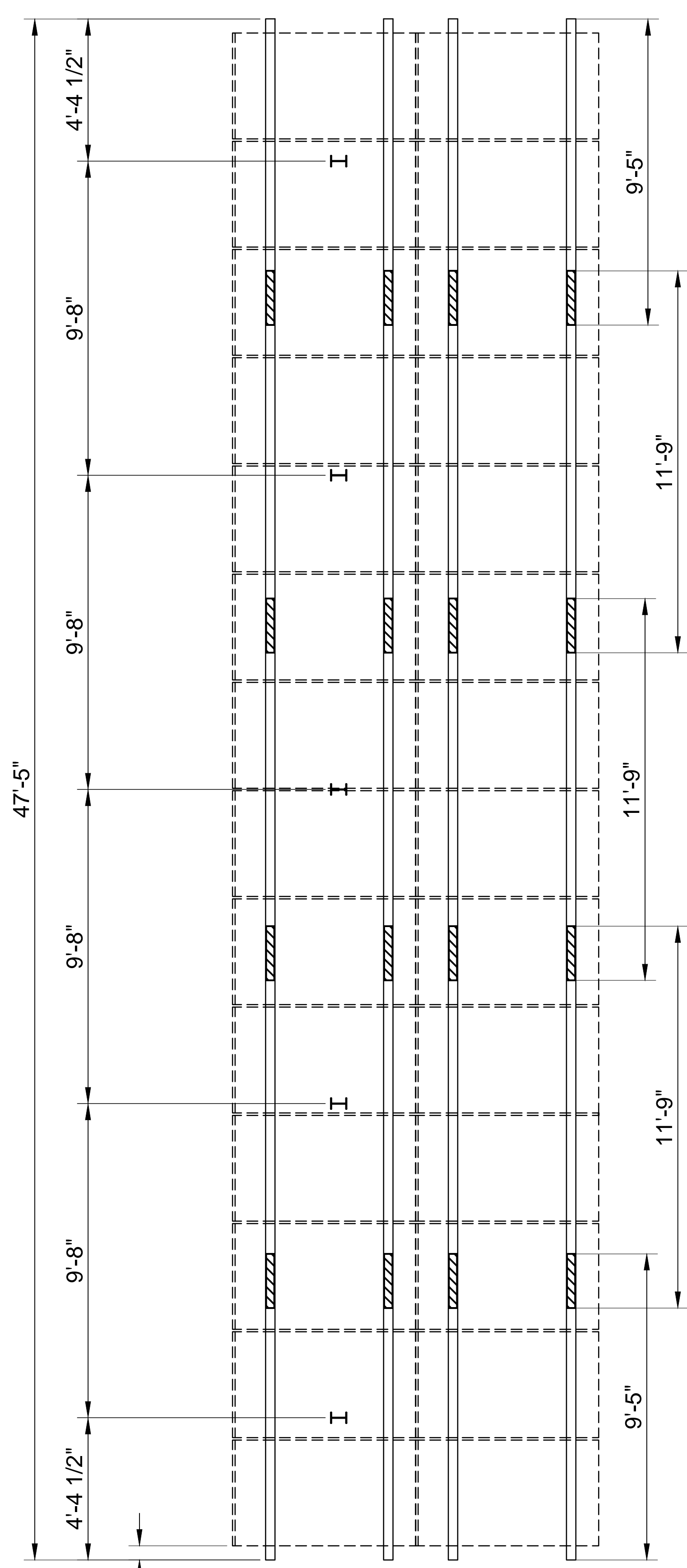
DRAWN: TJS  
CHECKED: RGC  
APPROVED: JEK  
DATE: 03/11/14  
DRAWING DESCRIPTION:  
2 ROWS X 14 COLUMNS  
ARRAY

SHEET NUMBER:  
2 of 2

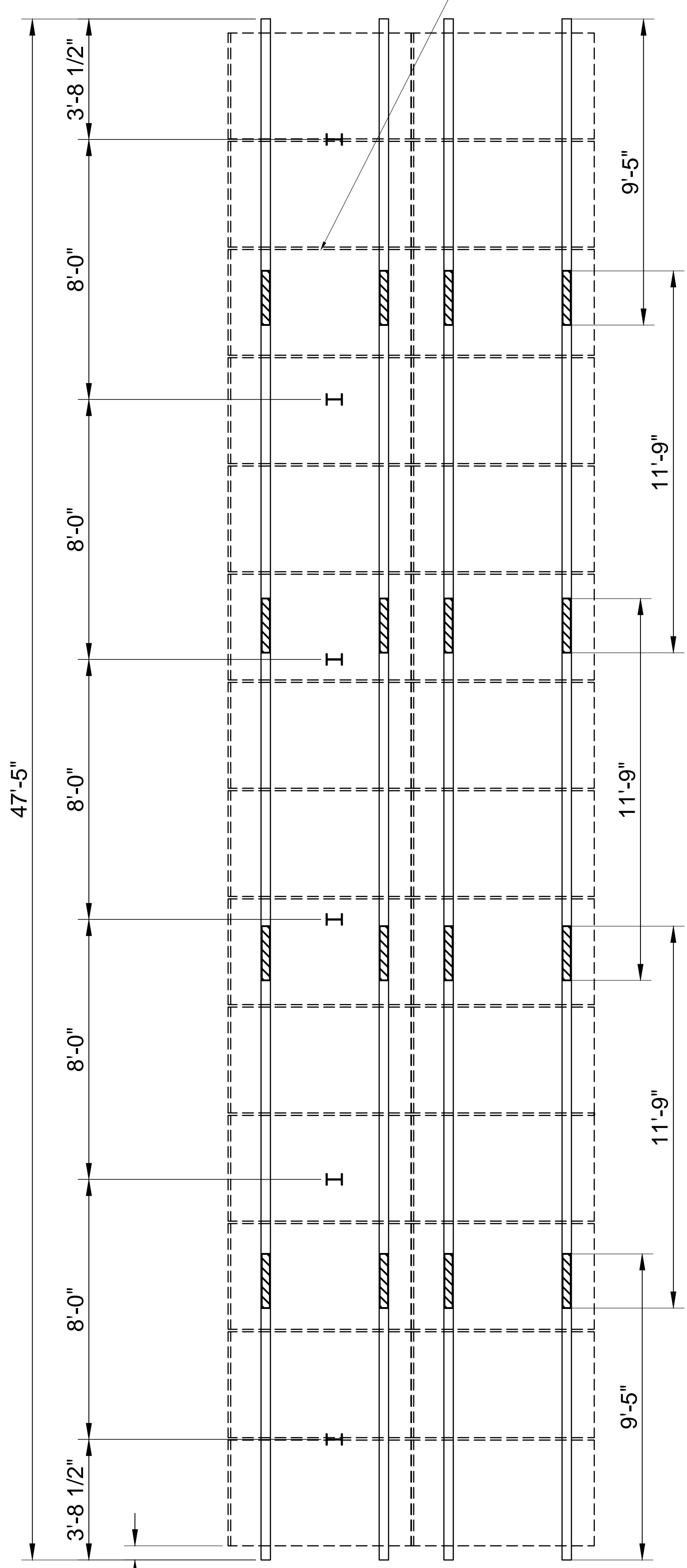
DRAWING NUMBER: REVISION:



AET PART #:OL72414  
2 ROWS X 14 COLUMNS  
4 POSTS  
72 CELL MODULE

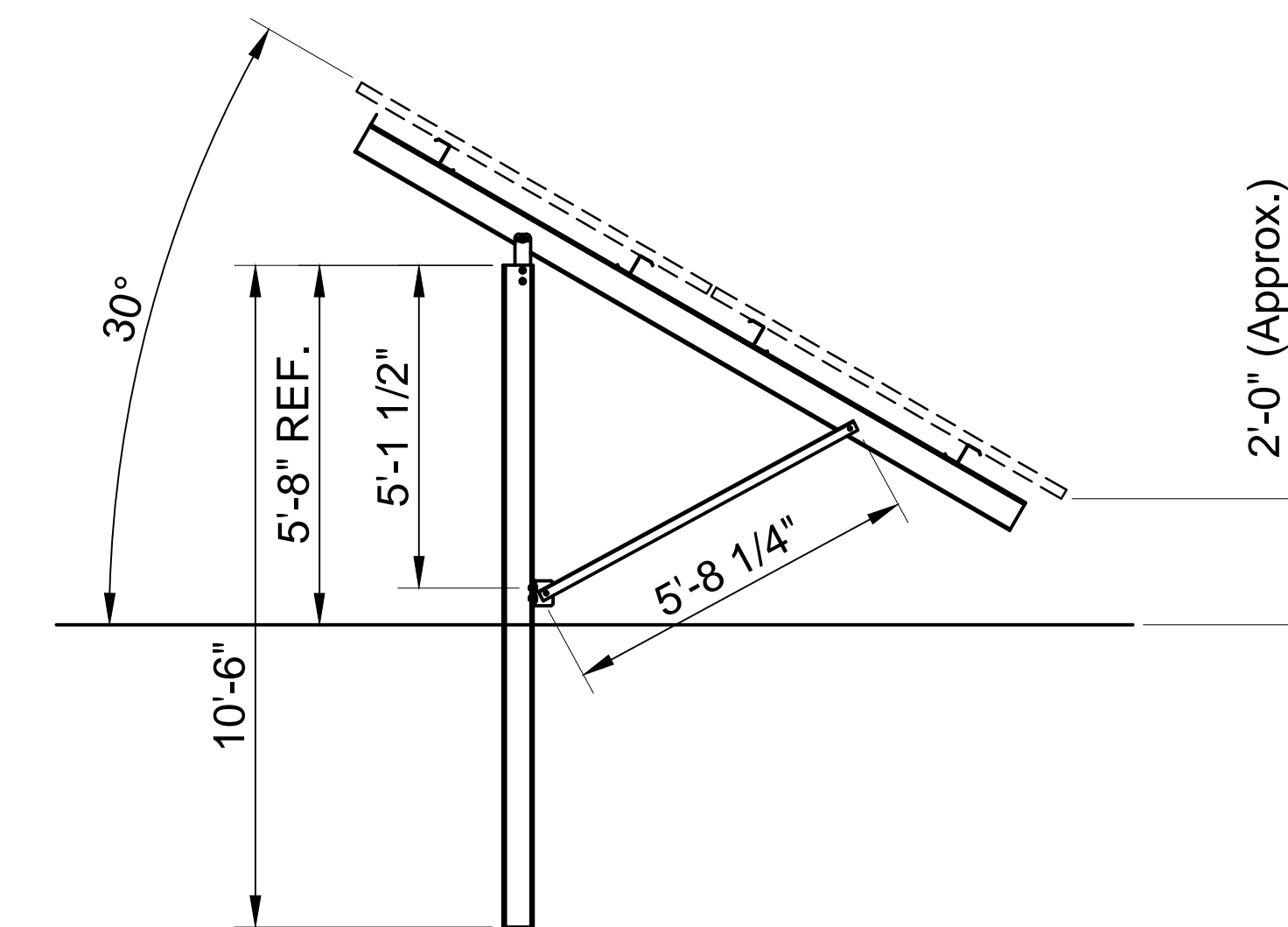


AET PART #:OL72514  
2 ROWS X 14 COLUMNS  
5 POSTS  
72 CELL MODULE



AET PART #:OL72614  
2 ROWS X 14 COLUMNS  
6 POSTS  
72 CELL MODULE

LOCATE PURLIN BRACE MID WAY BETWEEN POSTS TYP.



SIDE VIEW - 72 CELL MODULE

BILL OF MATERIAL				
AET PART NO.	DESCRIPTION	OL72414	OL72514	OL72614
-	SOLAR MODULE (NOT INCLUDED)	28	28	28
-	GND MNT SYSTEM 2x14 ARRAY (28 MODULES)	1	1	1
81148-102	Z-PURLIN - 102" OR 8'-6" LONG	12	X	X
81148-113	Z-PURLIN - 113" OR 9'-5" LONG	8	8	8
81148-141	Z-PURLIN - 141" OR 11'-9" LONG	4	12	12
81148-152	Z-PURLIN - 152" OR 12'-8" LONG	X	X	X
81069	POST - W6 X 7 - 10'-6" LONG	4	5	6
81039	PLATE - POST TO Z-STRUT CONNECTOR	4	5	6
81072-144	Z-STRUT - 12" LONG FOR 72 CELL MODULE	4	5	6
81011	L-BRACKET - POST TO STRUT BRACE	4	5	6
81013	PURLIN BRACE - 12" LONG	3	4	5
81349-68.25	STRUT BRACE - 68.25" LONG FOR 72 CELL MODULE	4	5	6
80918	HEX NUT - 1/2" - 13	28	35	42
81026	HEX BOLT 1/2"-13 X 1.25"	16	20	24
80921	CARRIAGE BOLTS - 1/2"-13 X 1.25"	12	15	18
80911	BOLT - 3/8" X 1"	120	96	96
80682	WASHER - 3/8" HARDENED	240	192	192
80686	NUT - 3/8" GRADE 8	120	96	96
80687	FLAT HARDENED WASHER - 1/2"	44	55	66
81024	FLANGE NUT - 1/4"-20	44	56	68
81023	SCREW - 1/4"-20 DRILL POINT	44	56	68
81016	MID CLAMP ASM	52	52	52
81022	END CLAMP ASM	8	8	8

PANEL WIDTH (mm)	"A" (in.)
982	9.98
986	8.88
990	7.78
991	7.50
992	7.23
993	6.95
994	6.68
999	5.30
1000	5.02
1001	4.75

DIMENSION "A"

ASCE WIND SPEEDS		GROUND SNOW LOAD (PSF)										
7-05	7-10*	0	5	10	15	20	25	30	35	40	45	50
90	108	4	4	4	4	4	4	5	5	5	5	5
100	120	4	4	5	5	5	5	5	6	6	6	6
110	132	5	5	5	5	5	5	6	6	6	6	6
120	144	6	6	6	6	6	6	6	6	N/A	N/A	N/A

POSTS PER ARRAY - 72 CELL MODULE



NORTH